



# GOFORTH FOREST MANAGEMENT, INC.

P.O. Box 2841 • Meridian, MS 39302

Office: 601.693.2738 • Fax: 601.482.5761

**BID DATE: 29 FEB**

|                  |        |
|------------------|--------|
| Volume/Acre      | 14,754 |
| Pine Volume/Tree | 270    |
| 14" DBH & UP     |        |

## TIMBER SALE

Acting as agent for TLA, Ltd. we solicit bids on "All Merchantable Timber", EXCEPT IN THE STREAMSIDE MANAGEMENT ZONE, WHERE ONLY PINE TREES MARKED WITH BLUE PAINT SHALL BE CUT, on approximately 50 timbered acres described as, Part of NW ¼ south of old public road, Section 34, Township 15 North, Range 3 West, Choctaw County, Alabama, as shown on the attached map. We have made a 10% estimate of the pulpwood size trees. Our estimate of their volumes in **cords** are:

|              |           |
|--------------|-----------|
| Pine         | 18        |
| Hardwood     | 49        |
| <b>TOTAL</b> | <b>67</b> |

We have made a 100% count of the sawtimber-trees. Our estimate of their volumes in **board feet** are:

|              |                |
|--------------|----------------|
| Pine         | 724,600        |
| Red Oak      | 7,500          |
| White Oak    | 300            |
| Gum          | 3,500          |
| Poplar       | 100            |
| Misc.        | 1,700          |
| <b>TOTAL</b> | <b>737,700</b> |

WE HAVE MEASURED THE DBH OF ALL SAWTIMBER TREES WITH A STEEL TAPE, TALLIED EACH WITH CARE, AND ESTIMATED THEIR VOLUME IN ACCORDANCE WITH THE MOST PREVALENT SCALING PRACTICES IN THE AREA. WE ARE SO CONFIDENT OF THE ACCURACY OF OUR WORK THAT WE GUARANTEE OUR SAWTIMBER TREE COUNT. FOR COMPLETE DETAILS ON THE WRITTEN GUARANTEE, PLEASE GIVE US A CALL.

Bidders should assume that they will pay any severance taxes due. All woods roads and fences must be maintained at all times and restored to their original condition when logging is completed. A period of time until 31 August 2013 will be allowed to cut and remove the timber. ALL LOGGING OPERATIONS MUST BE CONDUCTED ACCORDING TO THE GUIDELINES ESTABLISHED BY "BEST MANAGEMENT PRACTICES OF ALABAMA."

Only sealed bids will be accepted, and the owners reserve the right to reject any or all bids. **BIDS SHOULD BE MAILED TO TLA, Ltd., C/O GOFORTH FOREST MANAGEMENT, INC., PO BOX 2841, MERIDIAN, MISSISSIPPI, 39302.** Bids must be made on a lump sum basis and must be received at this address no later than 10:00 a.m. on the 29 February 2012. You may Fax your bid to 601-482-5761. Bids may be delivered to 2506 9<sup>th</sup> St., Meridian, MS.

We will be glad to show the timber to you. You may make an appointment by contacting me at the enclosed numbers.

Sincerely,

GOFORTH FOREST MANAGEMENT, INC.

*Ricky G. Goforth*  
Ricky G. Goforth

TLA, LTD PROPERTY, CROMWELL TRACT  
 CHOCTAW COUNTY, ALABAMA  
 NUMBER OF MERCHANTABLE TREES BY DBH AND LOG LENGTHS  
 P U L P W O O D

| DBH | PINE  |        | HARD HARDWOOD |        | Total |        |      |
|-----|-------|--------|---------------|--------|-------|--------|------|
|     | Trees | Volume | Trees         | Volume | Trees | Volume |      |
| 6   | 0     | 0.0    | 230           | 9.0    | 230   | 9.0    |      |
| 8   | 40    | 4.0    | 270           | 21.3   | 310   | 25.3   |      |
| 10  | 60    | 10.0   | 70            | 9.3    | 130   | 19.3   |      |
| 12  | 0     | 0.0    | 30            | 5.9    | 30    | 5.9    |      |
| 14  | 10    | 3.8    | 0             | 0.0    | 10    | 3.8    |      |
| 16  | 0     | 0.0    | 10            | 3.4    | 10    | 3.4    |      |
|     |       | 110    | 17.8          | 610    | 48.9  | 720    | 66.7 |

NOTE: PULPWOOD VOLUME SHOWN IN STANDARD CORDS

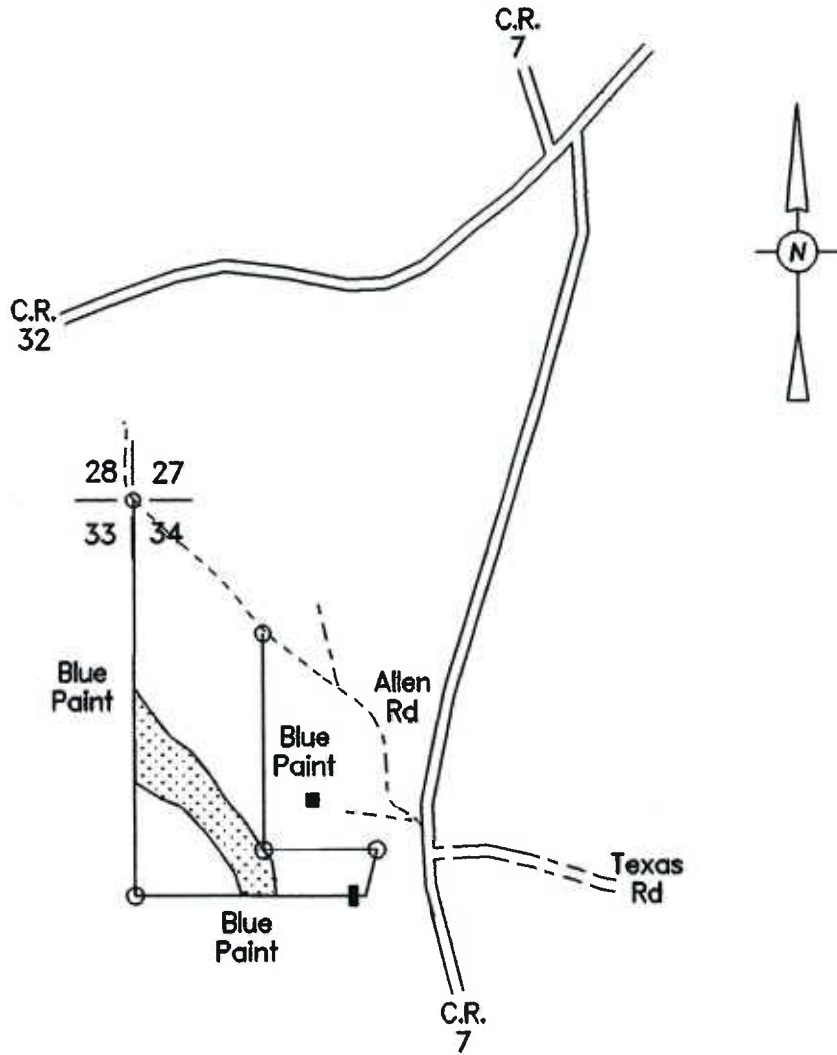
| DBH | PINE |    |     |     |    | S A W T I M B E R |       |     |     |     | POPLA MISC HDWD |        |   |
|-----|------|----|-----|-----|----|-------------------|-------|-----|-----|-----|-----------------|--------|---|
|     | 1    | 2  | 3   | 4   | 5  | RED OAK           | WHITE | GUM | --- | --- | Trees           | Volume |   |
| 10  | 1    | 2  | 3   | 4   | 5  | 1                 | 2     | 1   | 1   | 2   | 1               | 1      | 2 |
| 12  | 43   |    |     |     |    |                   |       |     |     |     |                 |        |   |
| 14  | 2    | 61 | 196 |     |    | 7                 |       | 10  |     |     | 1               | 5      | 1 |
| 16  | 12   | 48 | 180 | 325 |    | 7                 | 2     | 15  |     |     | 1               | 3      | 1 |
| 18  | 3    | 40 | 217 | 461 | 24 | 10                | 7     | 1   |     |     |                 |        |   |
| 20  | 4    | 36 | 213 | 396 | 14 | 4                 | 2     | 2   |     |     |                 |        |   |
| 22  | 5    | 27 | 153 | 167 |    | 2                 | 1     |     |     |     |                 |        |   |
| 24  | 4    | 24 | 64  | 41  | 1  | 2                 | 1     |     |     |     |                 |        |   |
| 26  | 3    | 11 | 49  | 15  |    | 3                 | 1     | 1   |     |     |                 |        |   |
| 28  | 1    | 9  | 25  | 7   |    | 1                 | 1     | 1   |     |     |                 |        |   |
| 30  | 3    | 14 | 4   | 4   |    | 1                 | 1     |     |     |     |                 |        |   |
| 32  | 4    | 2  | 1   | 1   |    |                   |       |     |     |     |                 |        |   |
| 34  | 1    | 1  | 2   | 1   |    | 1                 |       |     |     |     |                 |        |   |
| 36  | 2    |    |     |     |    |                   |       |     |     |     |                 |        |   |
| 38  |      |    |     |     |    |                   |       |     |     |     |                 |        |   |
| 40  |      |    |     |     |    |                   |       |     |     |     |                 |        |   |

| DBH | PINE  |       | RED OAK |     | WHITE OAK |     | GUM   |     | POPLAR |     | MISC HDWD |        | Total |        |
|-----|-------|-------|---------|-----|-----------|-----|-------|-----|--------|-----|-----------|--------|-------|--------|
|     | Trees | Vol   | Trees   | Vol | Trees     | Vol | Trees | Vol | Trees  | Vol | Trees     | Volume | Trees | Volume |
| 10  | 43    | 1.5   |         |     |           |     |       |     |        |     |           |        | 43    | 1.5    |
| 12  | 259   | 17.9  |         |     |           |     |       |     |        |     |           |        | 259   | 17.9   |
| 14  | 565   | 73.7  | 7       | 0.4 | 2         | 0.2 | 10    | 0.5 |        |     |           |        | 583   | 74.7   |
| 16  | 745   | 149.5 | 7       | 0.5 |           |     | 15    | 1.2 | 1      | 0.1 |           |        | 776   | 152.0  |
| 18  | 663   | 188.5 | 10      | 1.1 | 1         | 0.1 | 8     | 1.0 |        |     |           |        | 685   | 191.1  |
| 20  | 352   | 128.4 | 6       | 1.1 |           |     | 2     | 0.3 |        |     |           |        | 362   | 130.0  |
| 22  | 134   | 60.0  | 3       | 0.7 |           |     |       |     |        |     |           |        | 138   | 61.0   |
| 24  | 78    | 43.8  | 4       | 1.1 |           |     | 1     | 0.2 |        |     |           |        | 84    | 45.3   |
| 26  | 42    | 28.6  | 2       | 0.8 |           |     | 1     | 0.3 |        |     |           |        | 45    | 29.7   |
| 28  | 21    | 18.2  | 1       | 0.6 |           |     |       |     |        |     |           |        | 22    | 18.8   |
| 30  | 7     | 6.3   | 1       | 0.7 |           |     |       |     |        |     |           |        | 8     | 7.0    |
| 32  | 4     | 4.8   | 1       | 0.5 |           |     |       |     |        |     |           |        | 5     | 5.3    |
| 34  | 3     | 3.4   |         |     |           |     |       |     |        |     |           |        | 3     | 3.4    |

2,916 724.6 42 7.5 3 0.3 37 3.5 1 0.1 14 1.7 3.013 737.7

NOTE: SAWTIMBER VOLUME IN THOUSAND BOARD FEET, DOYLE SCALE

# TLA, LTD Property Township 15 North, Range 3 West Choctaw County, Alabama



NOTE: All outer boundaries are flagged in PINK.



Streamside Management Zone is flagged in ORANGE.

| LEGEND              |               |
|---------------------|---------------|
| January 26, 2012    |               |
| METAL CORNER MARKER | ○             |
| PINE KNOT CORNER    | ●             |
| WOODS ROAD          | - - - - -     |
| GRAVEL ROAD         | = = = = =     |
| PAVED ROAD          | = = = = =     |
| STREAM              | ←             |
| INTERMITTENT STREAM | - · - · - · - |
| TIMBER TYPE LINE    | - · - · - · - |
| BUILDING            | □             |



Goforth Forest Management, Inc.  
P.O. Box 2841 Meridian, Ms 39302  
601-693-2738

TLA, LTD Property  
Township 15 North, Range 3 West  
Choctaw County, Alabama

